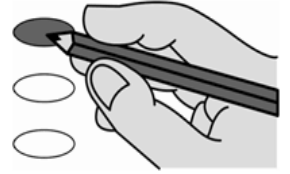


# AUGUST 7, 2018 PRIMARY ELECTION BALLOT MARKING REMINDERS

1. Completely darken the oval using only a black or blue ink pen. DO NOT USE ANY OTHER INK COLOR!



2. VOTE IN ONE PARTISAN PARTY SECTION ONLY:

Republican, Democratic or Libertarian.

Partisan Section - Vote Only 1 Party Section		
Republican Party Section	Democratic Party Section	Libertarian Party Section




YOU CANNOT **"SPLIT YOUR TICKET."** IF YOU VOTE IN MORE THAN ONE PARTY SECTION, YOUR PARTISAN BALLOT WILL BE **REJECTED.**

**DO NOT** vote for more candidates than indicated under each office title.

**WRITE-IN CANDIDATES:** Write or place the name of that candidate in the blank space provided and completely darken the oval. **DO NOT** cast a write-in vote for a candidate whose name is already printed on the ballot for that office.

3. **TURN YOUR BALLOT OVER** - This ballot has two sides.



4.  If you make a mistake, return your ballot to the CLERK and obtain a new ballot. Do not attempt to erase or correct any marks made in error.

5. **FOR ABSENTEE VOTERS - WHEN YOU HAVE COMPLETED VOTING:** Place your voted ballot in the secrecy sleeve so that the numbered stub is visible. Then place the ballot and the secrecy sleeve in the AV ballot envelope and seal.

**IMPORTANT - Sign and date** the front of the AV Envelope and give to the Clerk.

